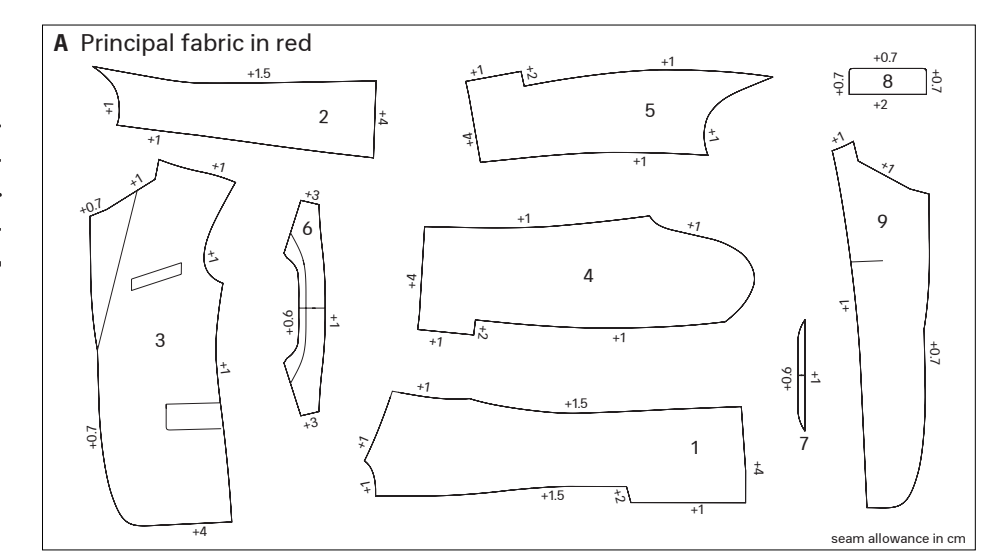


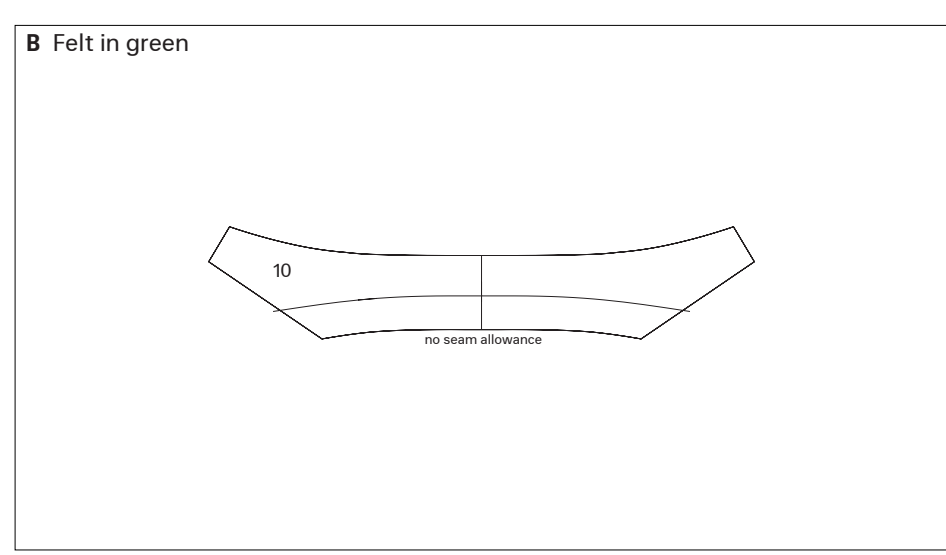
SIZING CHART

Types of line per size

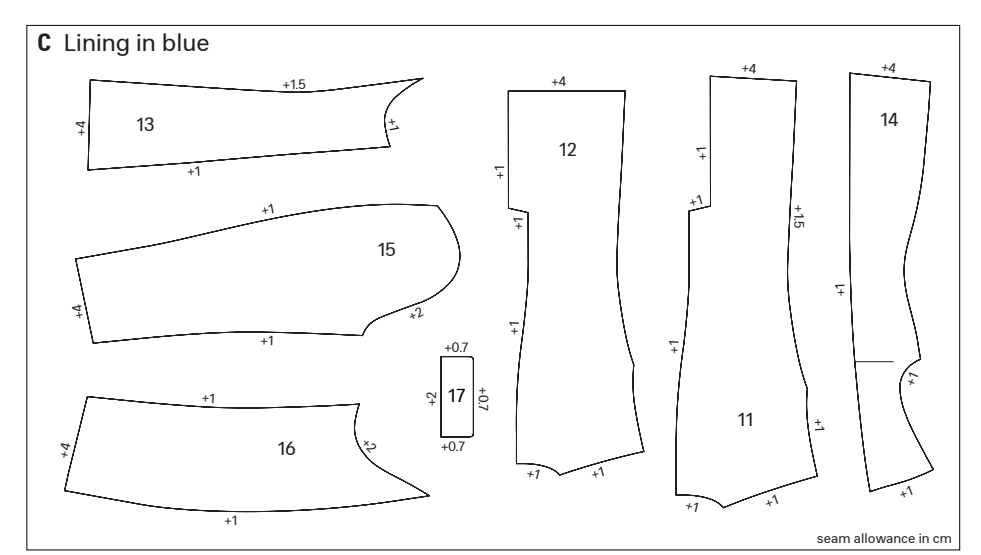
42	-----
44	-----
46	-----
48	-----
50	-----



- PIECES TO CUT**
- 1A Back x2
 - 2A Side x2
 - 3A Front x2
 - 4A Oversleeve x2
 - 5A Undersleeve x2
 - 6A Overcollar x1
 - 7A Overcollar stand x1
 - 8A Pocket flap x2
 - 9A Facing x2



- PIECES TO CUT**
- 10B Undercollar x1



- PIECES TO CUT**
- 11C Left back x1
 - 12C Right back x1
 - 13C Side x2
 - 14C Front x2
 - 15C Oversleeve x2
 - 16C Undersleeve x2
 - 17C Pocket flap x2

- FABRICS AND TRIMS**
- FABRICS**
- Principal fabric: Wool
 - Lining: Cupro
 - Undercollar: Felt and canvas reinforcement
 - Inside pockets: Percalé (standard piece, not included on this pattern)
- TRIMS (Not included on the pattern)**
- 15 cm thickness shoulder pad
 - Medium thickness sleeve roll
 - Full length medium weight classic Canvas
 - Two buttons 2.5 cm for front closure
 - Height buttons 1.8 cm for sleeves vent closure

- DETAILS**
- EXTERNAL POCKETS**
- Lower pocket left and right side
 - Flap pocket with double jet 0.5 cm in main fabric
 - Pocket facing in lining
 - Pocket bag in Percalé
 - Breast pocket only left side
 - Welt pocket in principal fabric
 - Pocket facing in lining
 - Pocket bag in Percalé
- INNER POCKETS**
- Left and right side
 - Inner pocket starts 1.5 cm inside the facing
 - 2 jet 0.5 cm in principal fabric
 - Length 12.5 cm
 - Pocket facing in lining
 - Pocket bag in Percalé

- BUTTONS AND BUTTONHOLES**
- Front buttons**
- Buttons are placed 15 cm from the front edge on the right side
 - Undercollar without seam allowance
 - Add 2 cm extra fabric at the front lapel and facing lapel for canvas assembly
 - Add 1.5 cm pleat at the centre back lining
- Sleeve buttons**
- Sleeve vent with four buttons
 - Buttonholes start 1.2 cm from the edge of the sleeve
 - First button is 4 cm from the end of the sleeve
 - Distance between buttons is 1.5 cm
- SEAM ALLOWANCES**
- Armhole seam allowance close and turned into the sleeve
 - Pocket facing in lining
 - Pocket bag in Percalé